

Activating Senteo™ Assessment Software



Applies to: Senteo™ Assessment Software

Overview

You must register your Senteo assessment software within 30 days of installation to keep it active. You need a license code to activate your software. Using the following procedure, you can find your license code.

You must connect your computer to the Internet and connect the Senteo receiver to your computer before you can search for a license code. After you complete the following procedure to find your license code, you can use the code to activate Senteo software on other computers, as outlined in the **License** tab in the *About Senteo Assessment Software* dialog box.

NOTE: After you find your license code, you don't need to connect the Senteo receiver to the other computers you want to activate Senteo assessment software on.

Details

To find your license code and activate Senteo assessment software

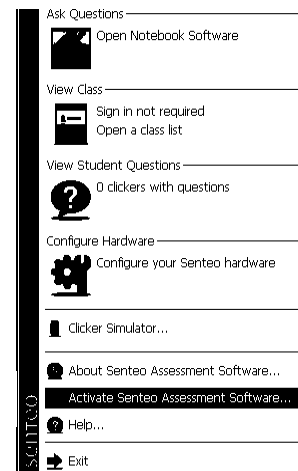
1. Click the **Senteo** icon in the Windows® notification area or Mac menu bar, and then select **Activate Senteo Assessment Software**.

The *Software Evaluation* dialog box appears displaying your time remaining in the software evaluation period.

NOTES

- If your 30-day evaluation expires, **Open Notebook Software**, **Activate Senteo Assessment Software** and **Exit** appear as the only available commands in the **Senteo** menu.

- If your Senteo assessment software is already activated, the **Activate Senteo Assessment Software** command is replaced by **Check for Updates**.



2. Click **Activate License**.
3. If a dialog box appears requesting a password, type an administrator's password.
4. Click **Find License Code**.

NOTE: You must connect your computer to the Internet and connect the Senteo receiver to your computer before you can search for a license code.

5. Click **Find License Code**.

The license code appears.

NOTE: If you didn't connect the receiver, a warning dialog appears.

6. Record the license code in a safe place, and then click **Close**.

You'll need your license code to activate Senteo assessment software on your other computers.

The activation program automatically copies the license code into the **License Code** box.

7. Type your e-mail address, and then click **Next**.

8. Select **Yes, I am connected**, and then click **Next**.
9. Click **Finish** to activate your Senteo assessment software.

To activate Senteo assessment software on other computers

After you obtain your license code, follow these steps to activate Senteo assessment software on other computers.

NOTE: If the computers don't have an Internet connection, you must contact SMART Technical Support by e-mail or telephone to get an activation key.

NOTE: After you find your license code, you don't need to connect the Senteo receiver to the other computers you want to activate Senteo assessment software on.

1. Click the **Senteo** icon in the Windows notification area or Mac menu bar, and then select **Activate Senteo Assessment Software**.

The *Software Evaluation* dialog box appears displaying your time remaining in the software evaluation period.

2. Click **Activate License**.

NOTE: You don't need to connect a Senteo receiver to your computer to activate the license.

3. If a dialog box appears requesting a password, type an administrator's password.
4. Paste or type your license code and e-mail address, and then click **Next**.
5. If you have an Internet connection, select **Yes, I am connected**, and then click **Next**.

OR

If you don't have an Internet connection, click **No, I am not connected**, and then click **Next**.

Click either the **activate by phone** or **activate by e-mail** option to request an activation key from SMART Technical Support. Type the activation key you obtain from Technical Support, and then click **Next**.

6. Click **Finish** to activate your Senteo assessment software.

First Published: July 10, 2007

Last Updated: November 9, 2007

SMART Technologies
1207 – 11 Avenue SW, Suite 300
Calgary, AB T3C 0M5
CANADA



www.smarttech.com/support www.smarttech.com/contactsupport
Support +1.403.228.5940 or Toll Free 1.866.518.6791 (Canada/U.S.)

© 2007 SMART Technologies ULC. All rights reserved. Senteo, smarttech and the SMART logo are trademarks or registered trademarks of SMART Technologies ULC in the U.S. and/or other countries. All other third-party product and company names may be trademarks of their respective owners. Patents pending. Contents are subject to change without notice.11/2007.